

AirSmart ICTUS

Heat Recovery Ventilation



ICTUS C

ICTUS W



Lightweight
>18KG



Quickinstall
<15min



Low SFP
Value



Up to 91%
efficient

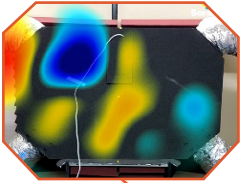
ICTUS C250 – C330 – C450 @200Pa CEILING

Space-saving, energy-efficient, easy to install, whisper-quiet

These key characteristics were specified at the beginning of the design process. No effort or expense was spared to combine these characteristics in a new unit.

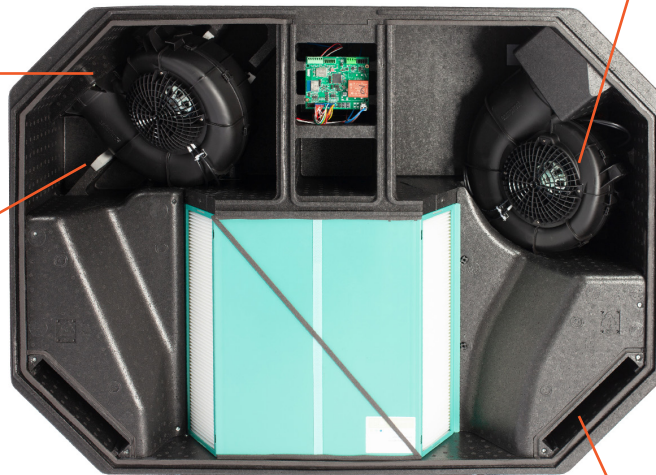
SCIENTIFICALLY BACKED

Noise sources were mapped out in a lab using 3D software. Wherever possible the noisemakers were neutralized and reduced, resulting in extremely quiet units.



MINIMAL RESISTANCE

Customized fanhouse and special EPP moulding reduce resistance, optimizing airflow.



HEALTH IMPROVING

Enhance your ICTUS with an optional CO₂ sensor for automatic air quality adjustments, ensuring a healthier living space effortlessly.



QUALITY FILTERS

Particulate filters are delivered as standard. Pollen filters are available as an option.



MULTI-MOUNTING

Offering four versatile mounting options, our unit provides a tailor-made ventilation solution for every home's unique layout.

Key numbers:



Size: L1065 x W770 x H327



Specific Fan Power Index (C250): 0.22 W/(m³/h)



Noise: 45dB with 250m³/h



Weight: 14,7kg



Thermal efficiency (C250): 91%

ICTUS

Shared Benefits



EASY COMMISSIONING

Commission your unit effortlessly through our user-friendly app, computer or display interface, saving you time and effort.



ICTUS C



QUIET

Experience tranquility with our near-silent operation, ensuring a peaceful environment in any space.



ICTUS W



LIGHTWEIGHT

Light and easy to handle, our units boast a lightweight design, simplifying the installation process without compromising performance.

<18KG



100% BYPASS + DEMAND CONTROL

Our innovative bypass system, coupled with intelligent (optional) sensors, adapts dynamically to your surroundings, ensuring unparalleled living comfort.



LEFT/RIGHT INTERCHANGEABLE

ICTUS units offer easy installation with left/right software interchangeability. Simplify your ventilation configuration for a seamless experience.

ICTUS W250 – W350 – W450 – W550 WALL

Performant, lightweight, easy to install, affordable

The ICTUS W blends seamless installation with peak efficiency. Crafted for the modern home, it ensures optimal living conditions are both accessible and affordable.



SEAMLESS DUCT CONNECTION

Our left and right software interchangeability comes with a foolproof design, ensuring an unmistakable connection for hassle-free installation by every professional.



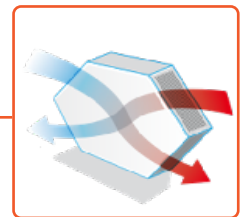
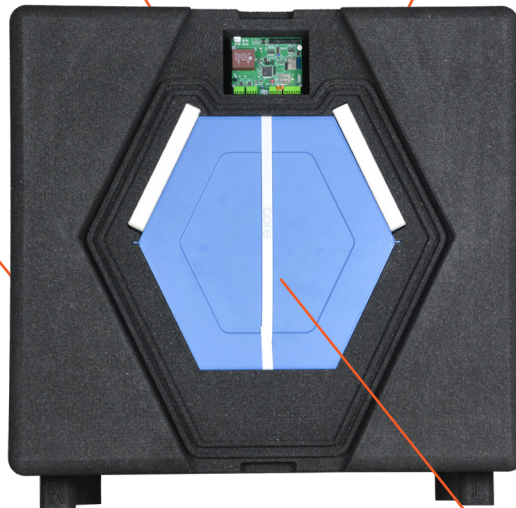
INSTALL WITH EASE

Our hang-and-go system with integrated spirit level ensures a seamless and hassle-free process, making it efficient and straightforward for installers of all levels of expertise.

250
350
450
550

AIRFLOW VERSATILITY

From apartments to standalone houses, ICTUS W caters to diverse airflow needs, ranging from 250 to 550m³/h, all at 200Pa, ensuring every home gets properly ventilated.



MINIMAL HEAT LOSS

Our advanced heat recovery technology ensures a healthy living space without compromising your energy bill. Also available with enthalpy.

Key numbers:



CAN BE USED IN **ANY TYPE OF HOUSING**

we understand your needs

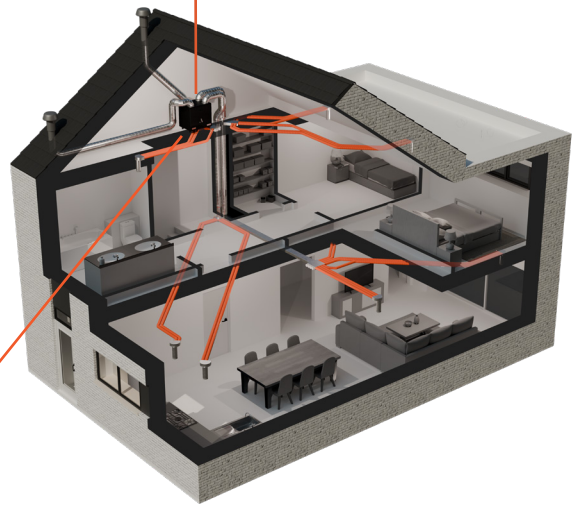
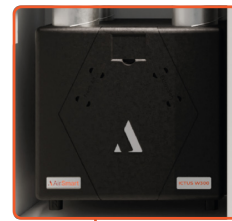
ICTUS C

With ICTUS C, no useful space is occupied unnecessarily and the supply and return lines are limited to a minimum. The filters are accessible and easily replaced.



ICTUS W

Whether mounted on the wall or placed independently on the floor, ICTUS W adapts effortlessly to your space. Its comprehensive range of airflow capacities, combined with a compact and lightweight design, ensures high performance and a healthier living environment, regardless of your home's layout



compatible with
CLICK & FIX

The ICTUS C and ICTUS W units are perfectly complemented by our CLICKFIX air distribution system, designed for semi-rigid ducts. With its patented plug-and-play connectors, CLICKFIX stands out as one of the easiest and most efficient systems to install. Available in three diameters 63mm, 75mm, and 90mm it offers versatile solutions to accommodate any home's needs.

AIRSMART IN A NUTSHELL

Belgium's Finest

As a premier Belgian manufacturer of ventilation solutions, AirSmart is dedicated to simplifying installation processes and ensuring affordability, making advanced ventilation accessible to homes everywhere. Below, we outline our core focuses.



INSTALLING CONVENIENCE

AirSmart's products are designed with installation convenience at the forefront, offering dummy-proof solutions that significantly enhance efficiency. This streamlined installation process not only reduces time on-site but also increases project profitability, ensuring a seamless and cost-effective implementation for every project.



QUALITY

AirSmart prioritizes quality in every aspect of production. With local manufacturing in Belgium and the integration of premium components, our products are engineered to meet the highest standards. Fueled by market feedback, our innovative approach ensures that each unit delivers exceptional performance and reliability, guaranteeing long-lasting satisfaction for our customers.



COST-EFFECTIVENESS

AirSmart excels in cost-effectiveness through innovative materials, local production, and a streamlined supply chain, resulting in minimal overhead costs. This allows us to offer high-quality ventilation solutions at competitive prices, enabling our customers to enjoy larger margins on their projects.



SUSTAINABILITY

AirSmart prioritizes sustainability with 100% recyclable components, local production for reduced emissions, and energy-efficient technologies, ensuring an eco-friendly choice without compromising quality or performance.